

Buckeye Eco Proportioning System

USER MANUAL

Installation — Wall Mount Only

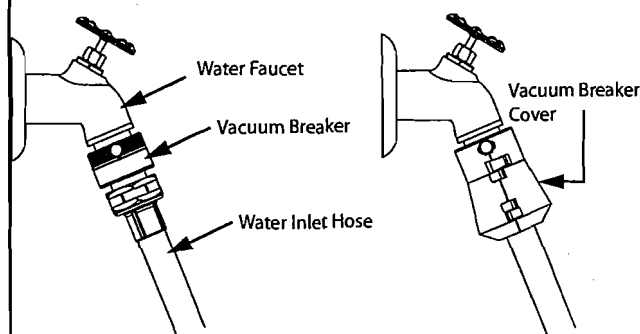
Installation Requirements:

- Mount Eco Proportioning System directly over a sink or floor drain, approximately 4 feet above floor.
- Check to ensure the following requirements:
 - Water Supply Pressure: 30 psi (pounds per square inch) minimum – 80 psi maximum
 - Backflow Preventor: Per local plumbing code
 - Check Level: To ensure Eco System is installed level
 - Water Temperature: 40°F (4°C) min. – 120°F (50°C) max.

Tools required for installation:

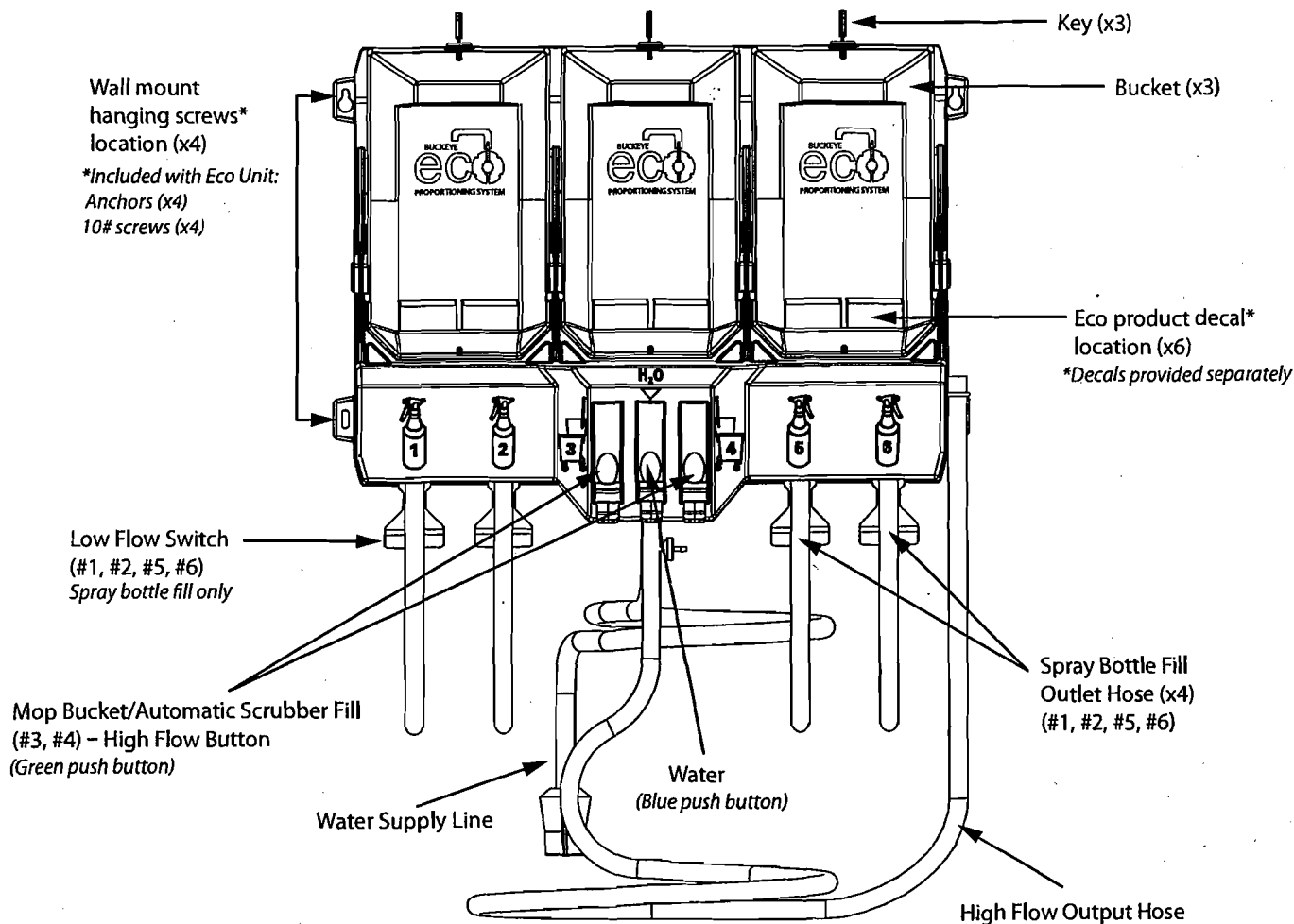
- Wrench
- Teflon tape (plumber's tape)
- Bubble level
- Electric drill with attachments
- PSI gauge

Vacuum Breaker Assembly Instructions:



1. Tighten the vacuum breaker onto a fixed, hard plumbed water faucet, ensuring that the vacuum breaker is installed upright on a vertical plane and a minimum of 6 inches above flood-level rim.
2. Connect the inlet hose onto the vacuum breaker.
3. Place vacuum breaker cover over the vacuum breaker to prevent ater from splashing out.
4. Ensure hot water fixture is turned off when Eco Proportioning System is not in use.

Eco Proportioning System Close view

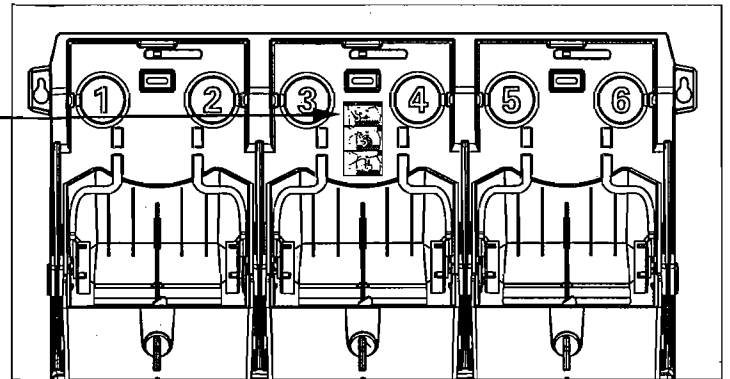
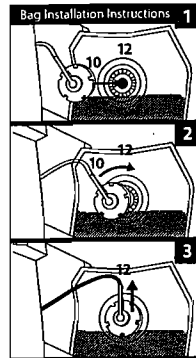


Operating Instructions:

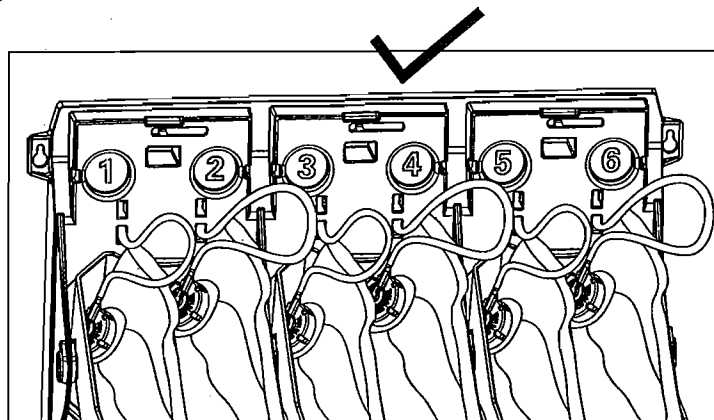
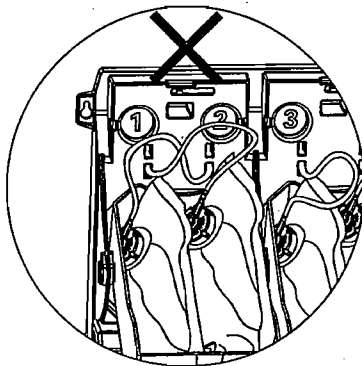
Eco Proportioning System Open view

Quick Connect:

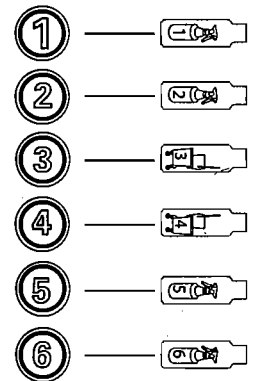
To properly connect Eco Bag to Eco Unit, refer to graphic panel (located in the center section of unit) for instructions.



Do Not Cross Connect Quick Connect Lines



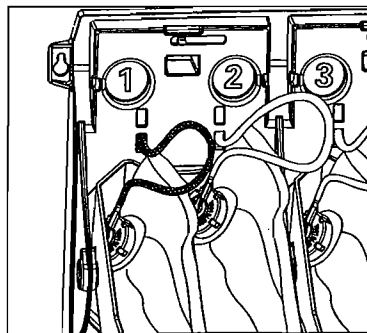
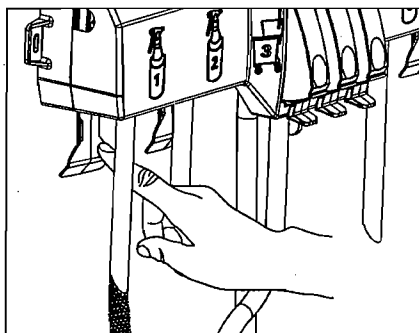
For correct connection, match up panel number with Eco Cleaner line label:



NOTE: Make sure chemical lines are not pinched/kinked when installed

Prime Eco Proportioning System before use:

- After properly connecting Eco bag to Eco Unit, engage each switch (low flow switch) and button (high flow button) to allow chemical to fill lines completely (approximately 20 seconds).
- Make sure no air bubbles remain in chemical lines before diluting chemical for use.



Eco Proportioning System is a SINGLE DISPENSE SYSTEM ONLY

Do not do the following:

