



OPERATING INSTRUCTIONS FOR BUCKEYE'S SANI-Q SANITIZING GUN

APPLICATION: Mixes cleaning chemicals with water as you spray to wash vehicles, equipment, buildings or any area. Use with cleaning and sanitizing chemicals in food preparation areas, wash rooms, meat cutting rooms, barns or any situation where use of water diluted chemicals is required. Unit also handles detergents, soaps and degreasers for vehicle washing, cleaning buildings, driveways, etc.

SPECIFICATIONS: Recommended water pressure - 40 to 60 psi.

INSTRUCTIONS ASSEMBLY: Slide plastic siphon tube (Item 10) inside sleeve under bottle cap, attach bottle to gun. Connect deflector (Item 3) to front of mixing head (Item 5).

INSTRUCTION OPERATION: Connect water supply hose to pistol grip shut-off valve handle (Item 6). Remove and fill bottle with liquid chemical concentrate. **CAUTION:** To prevent chemical loss from bottle out of air vent hole in mixing head, sprayer assembly must remain in upright position at all times. Turn dial to letter "A". This will automatically mix chemical with water at ¼ oz. per gallon. Pistol grip shut-off valve lever must be fully depressed for accurate mixing.

For rinsing with water only, turn dial to "O".

This gun is provided with a deflector (Item 3), to provide a fan spray for covering wide areas. This deflector may be adjusted by bending it further into or out of the water stream for a wider or narrower fan spray or the deflector can be removed to provide a powerful needle stream.

MAINTENANCE: After each use the gun must be cleaned to ensure continued trouble-free operation.

Empty and rinse bottle, refill with water or the appropriate solvent, and spray for several minutes to rinse out orifices within mixing chamber.

In instances where a chemical is particularly caustic or viscous, it may be necessary to soak the mixing head in water or neutralizer. This should eliminate contamination of the mixing head and build up of dried chemicals.

REPAIR & WARRANTY: This gun is guaranteed against defects in materials and workmanship for a period of one (1) year from the date of purchase. The manufacturer is not responsible for guns that have been altered, incorrectly used, improperly maintained, not cleaned or abused.

Information on parts for field repair or replacement of lost parts is available from your original supplier of the gun.

WARNING: Always wear eye protection that complies with current ANSI Standard Z87.1. Wear protective clothing and use a respirator when recommended by chemical manufacturer. Spray in a well ventilated, open area.

Pistol Grip Handle is equipped with an anti-siphon device to prevent chemicals from being drawn back into hose. *Do not substitute pistol grip handle.*

Do not spray water or solution into an electrical outlet. Severe electric shock could result.

Clean sprayer and bottle thoroughly after each use to prevent contamination between different chemicals.

Bottle must remain upright to prevent chemical loss out of air vent hole in the mixing head.

Before using, read and understand chemical manufacturer's instructions and warnings.

**FAILURE TO HEED ALL SAFETY INSTRUCTIONS AND WARNINGS
COULD RESULT IN PROPERTY DAMAGE, SERIOUS BODILY INJURY OR DEATH.**

Mfg. for

Buckeye International, Inc.

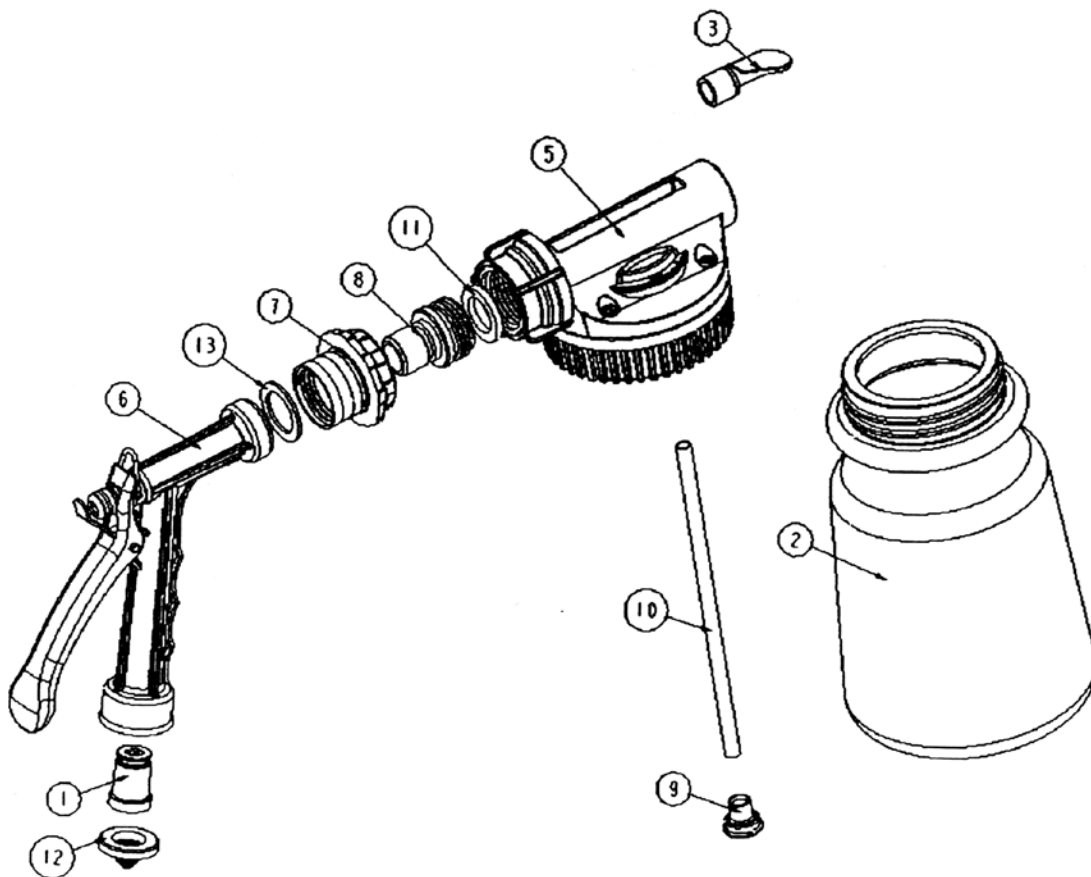
2700 Wagner Place • Maryland Heights • MO 63043 • USA • (314) 291-1900

1916 (9/02)

DESCRIPTION

PART NUMBER

1 - Anti-Siphon Unit	45550006 (7373)
2 - Bottle	(92020 (Quart))
3 - Deflector	45550003 (7319)
5 - Mixing Head Complete	(9311BU)
6 - Pistol Grip Shut-Off	(751OR (Includes Anti-Siphon Unit & Filter Washer))
7 - Quick Coupler/Female	45550001 (09QCFBLK)
8 - Quick Coupler/Male	45550007 (09QCMBLK)
9 - Screen & Holder	45550009 (36277)
10 - Siphon Tube	(95QG24 (Quart))
11 - Washer (Head)	45550011 (57310)
12 - Washer (Filter)	45550012 (6817)
13 - Quick Coupler Washer	45550008 (09QSR)



CALIFORNIA PROPOSITION 65 WARNING
WARNING: This product contains chemicals known to the State of California to cause cancer and birth defects or other reproductive harm. (Installer: California law requires that this warning be given to the consumer.)

***Note:** When ordering Item 5 (“Mixing Head Complete”), please specify sprayer model, desired dilution rate and, if applicable, the chemical to be used.